

A blue-tinted photograph of a modern hospital corridor with white walls, doors, and a person walking in the distance.

ENTRANCE BOOK / HOSPITAL DOOR SYSTEMS

LABEL spa

Via Ilariuzzi, 17/A - SAN PANCRAZIO P.SE
43126 PARMA ITALIA - infocom@labelspa.it
t. + 39 0521 6752 - fax +39 0521 675222

LABEL INGRESSI

Via Enrico Fermi, 4 - LOC. CASTELGUELFO
43010 FONTEVIVO (PR) ITALIA

LABEL UK LIMITED

STOUBRIDGE ROAD INDUSTRIAL ESTATE,
FARADAY DRIVE,
WV15 5BQ BRIDGNORTH-SHROPSHIRE (UK)

ABOUT US

Originally founded in **1980** as an electronics laboratory - hence the **LABEL** acronym - over the years the company has established itself as an **automation electronics manufacturer**.

In the mid-90s, LABEL developed the first automatic door control unit; five years later, it launched on the market the first sliding door automation.

In the following years the management decided to keep expanding its range of automatic doors, with new products that soon gained recognition all over Europe as prestigious and high-quality: at last, automatic door automations manufactured in Italy achieved the same level of prestige as those manufactured by other competitors that had been operating on the world markets for a longer time.

The company also changed its internal structure, expanding its R&D and sales departments, and in **2004** it achieved the **ISO quality system certification from TÜV**.

In the following years LABEL kept pursuing its market-oriented strategy; in **2009**, following an acquisition, it established LABEL Ingressi, a company aimed at allowing LABEL to produce **complete doorsets**.

All products are conceived, designed, manufactured and tested at the San Pancrazio headquarters, in Parma, and all production process stages are carried out and directly managed inside the company. Today, LABEL is a successful company, whose automatic doors are installed wherever any automatic entry is required: hospitals, shopping centres, airports, banks, companies, retail shops, large-scale retailing.

Its widespread support network in Italy and a growing presence on international market allow the company to carry on its mission with confidence, determination and satisfaction and to offer the market a fast, effective service, as well as a cutting edge product; when the EN 16005 Standard came into force, in April 2013, LABEL was ready for it, and became from the start a reference point for customers and competitors alike.

Today, LABEL distributes its products to over 50 countries in 4 continents, and is regarded as a safe and reliable partner all over the world.

In **2014** it completed the acquisition of the whole share capital of JMD LIMITED, an English company with headquarters close to Birmingham, that has been the exclusive distributor of Label products for over 10 years.

JMD Limited has been for over 30 years a reference point in England for the professionals operating in the field of pedestrian automatic doors, and has actively contributed to the success of the Label brand in UK.

LABEL AROUND THE WORLD



EUROPA:
Italia
Belgio
Germania
Danimarca
Grecia
Spagna
Francia
Gran Bretagna
Lussemburgo
Olanda
Portogallo
Svezia
Finlandia
Austria
Rep. Ceca
Cipro
Malta
Croazia
Slovenia
Norvegia
Polonia
Svizzera
Turchia
Ungheria
Romania
Ucraina
Russia
Azerbaijan
Lituania
Estonia
Georgia
Slovacchia
SUD AMERICA:
Argentina
Brasile
Colombia
Costa Rica
Messico
Venezuela
Cile
ASIA PACIFICA:
Hong Kong
India
Singapore
Tailandia
Vietnam
Malesia
MEDIO ORIENTE:
Algeria
Emirati Arabi Uniti
Iran
Israele
Kuwait
Libia
Marocco
Pakistan
Qatar
Tunisia
Libano
Nuova Caledonia

HOSPITAL

The new range of **Hospital** products comes from **LABEL** thirty-year experience in the automatic doors market and includes automatic doors for surgery rooms, analysis laboratories, X-ray diagnostic rooms and controlled access areas.

Aligned with market purposes, Hospital doors have a specific technical value and include several accessories.

Hermetic doors, airtight doors, panels and intrados made of the most suitable materials for the intended use, like: laminate, stainless steel, enamelled steel, or panels specifically designed to dampen noise.

The cycle performed by Label includes all phases: from design to production and sales, through a production phase which is performed by departments with specialized personnel.

The high reliability of Evolus operators, ensuring the safety of all integrated systems, makes Label doors a bearing element in the surgery rooms.

The safety level guaranteed by all the components Label door consists of, in opening and closing phases, is aligned with the needs of persons who must enter the surgery room without touching the door wings.

The steel finishings improve the door design, while the fitting of any lead screens, with RX -protection glazed vision panels, complies with the needs of hospitals operating in environments with X-ray equipment.

LABEL products are certified and properly comply with all reference standards; in particular, the EVH-E hermetic door, with LB-H series profiles, achieved class 2 test in positive pressure and class 4 test in negative pressure, in compliance with EN 1026 standard.



SAFETY - HYGIENE - LOW NOISE EMISSIONS

All versions feature minimal noise emission during operation, thanks to the accurate design of gaskets and guides; as a consequence, these operators are suitable for environments where comfort is essential.

The layout of the structural section and panel system prevents dust deposits and allows easy cleaning.

The EVH operators are equipped with the most advanced safety systems, sensors and infra-red curtains, ensuring safety throughout the passageway.

LEAF PANEL - INTRADOS AND ACCESSORIES - GLAZED VISION PANELS - HANDLES

The Label hospital door systems are equipped with cutting-edge panels and accessories:

- Laminates
- Stainless steel
- Anti-bacterial enamelled steel
- Panels specifically designed to dampen noise



HPL DOORS





LABEL

HOSPITAL IN CASALE MONFERRATO (ITA)

Airtight automatic doors





HPL DOORS



HEALTHCARE EXHIBITION

Airtight automatic doors
with glazed vision panel and blind



HOSPITAL IN CARPI (ITA)

Airtight automatic doors
with glazed vision panel

HPL DOORS



HOSPITAL IN TORRE EVA (ITA)

Airtight automatic doors with glazed vision panel



STAINLESS STEEL



DOORS



LABEL



HOSPITAL IN IMOLA (ITA)

Hermetic automatic doors with glazed vision panel

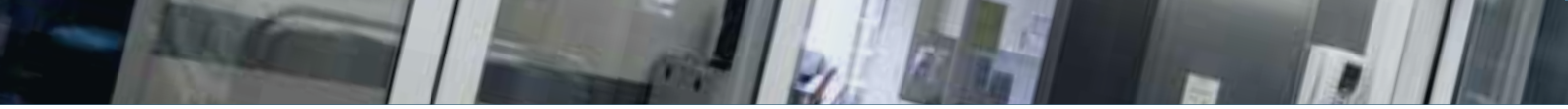


GALVANIZED STEEL



DOORS





HOSPITAL IN PESCHIERA (ITA)

Airtight automatic doors with glazed vision panel



GLAZED DOORS FOR OPERATING ROOM



DUBAI EXHIBITION

Airtight automatic door. Panel with motor-operated blind and stainless steel frame

DUBAI EXHIBITION

Airtight automatic door. Internal supporting structure made of fire-resistant and water-repellent wood. External coating in tempered glass with six-colour ceramic paint digital printing on glass. Steel protective frame along the sides.



PEDESTRIAN HOSPITAL



ACCESS DOORS



LAB

EMERGENCY ROOM IN BRESCIA (ITA)

Sliding door with certified LBH structural sections



EMERGENCY ROOM IN BRESCIA (ITA)

Automatic sliding doors with LBH structural sections and anti-panic breakout system



HOSPITAL IN CARPI (ITA)

Automatic sliding door with certified LBH profiles







HOSPITAL IN TORRE EVA (ITA)

Glazed sliding door with LB18 structural sections



HOSPITAL PEDESTRIAN DOORS



HOSPITAL IN BOLOGNA (ITA)

Automatic folding door
with anti-panic breakout system



LABE



HOSPITAL IN BOLOGNA (ITA)

Automatic sliding door with certified LBH structural sections



ACCESSORIES AND DETAILS



- 1) Glazed vision panel
- 2) Contactless sensor
- 3) Lifting handle

- 4) Safety sensor
- 5) Digital programmer



2



4



3



5



VIA ILARIUZZI, 17/A - S.PANCRAZIO P.SE
43126 PARMA ITALIA - Infocom@labelspa.it
T. +39 0521 6752 - F. +39 0521 675222

